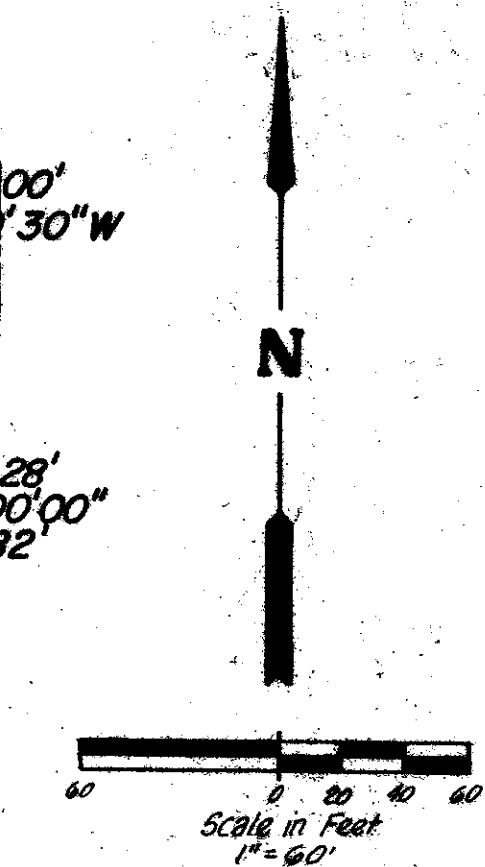
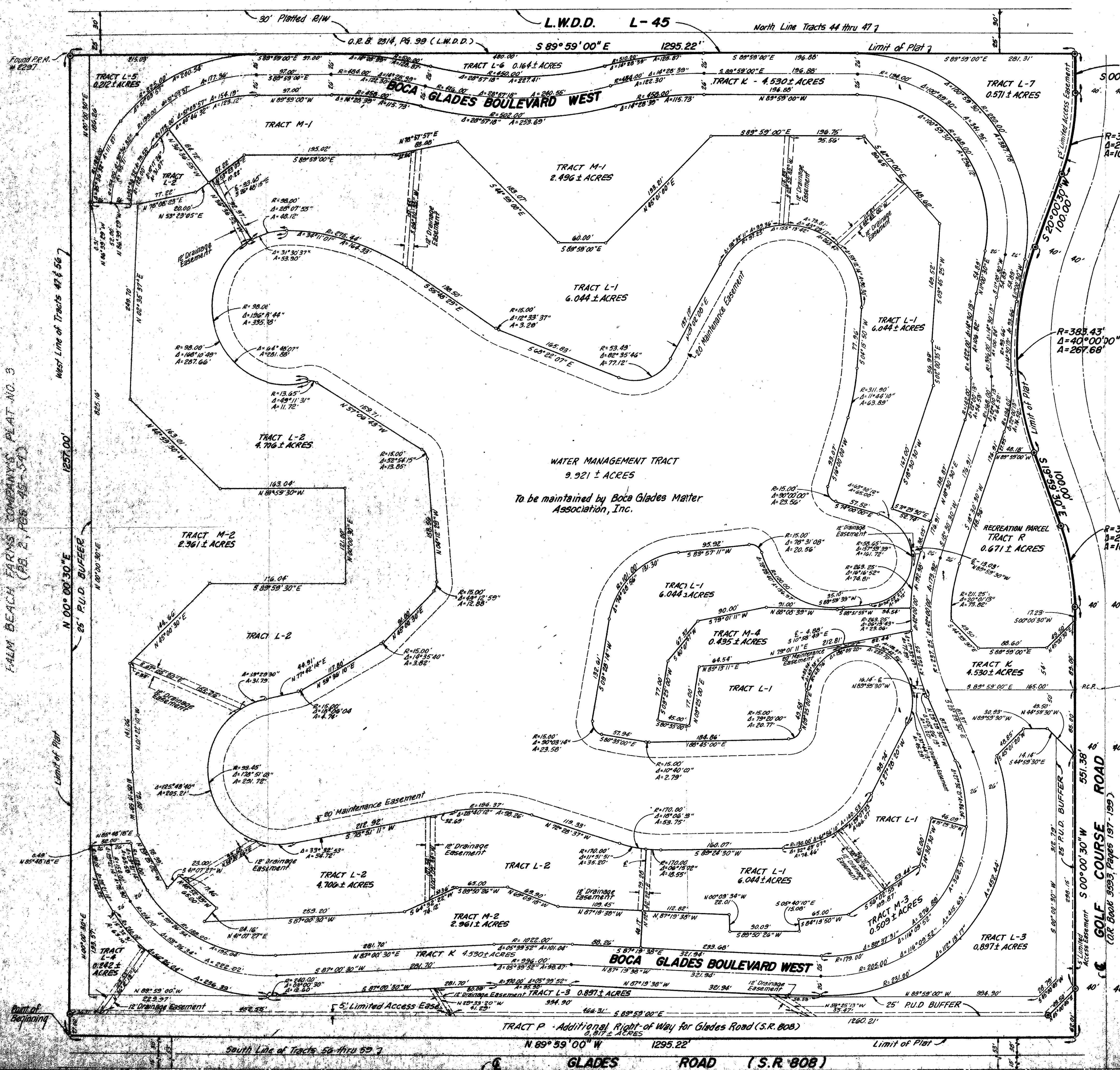


DRAWING NUMBER
5019

DRAWING NUMBER

DRAWING NUMBER

DRAWING NUMBER



NOTES:

- 1) © Denotes Permanent Reference Monument (P.R.M.)
- 2) There shall be no buildings or any kind of construction placed on utility or drainage easements.
- 3) • Denotes Permanent Control Points (P.C.P.)
- 4) All bearings shown herein refer to an assumed bearing of $N 00^{\circ} 00' 30'' E$ along the West Line of Tracts 47 and 56, Block 76, Palm Beach Farms Company's Plat No. 3 (P.B. 2, Pgs. 45-54).
- 5) There shall be no trees or shrubs placed on utility easements which are provided for water and sewer use or upon drainage easements.
- 6) Landscaping on other utility easements shall be allowed only after consent of all utility companies occupying same.

"PART OF A P.U.D."
BOCA GLADES NO. 3

BEING A REPLAT OF PORTIONS OF
 TRACTS 45, 46, 47, 56, 57, 58 AND 59, BLOCK 76, PALM BEACH FARMS COMPANY'S PLAT NO. 3
 (P.B. 2 PGS. 45-54) SITUATE IN SECTION 17, TOWNSHIP 47 SOUTH, RANGE 42 EAST,
 PALM BEACH COUNTY, FLORIDA

Apri

BOCA GLADES NO. 2 P.U.D.
(P.B. 47, PGS. 53 & 54)

5019
0279-001
BOCA GLADES

THIS INSTRUMENT PREPARED BY
C.C.I. CONSULTANTS, INC.
 ENGINEERS, SURVEYORS & PLANNERS
 440 EAST SAMPLE ROAD, SUITE 104, POMPANO BEACH,
 FLORIDA 33064-796-1501
 DATED: AUGUST, 1984